

ImageBee plugin for KNIME.

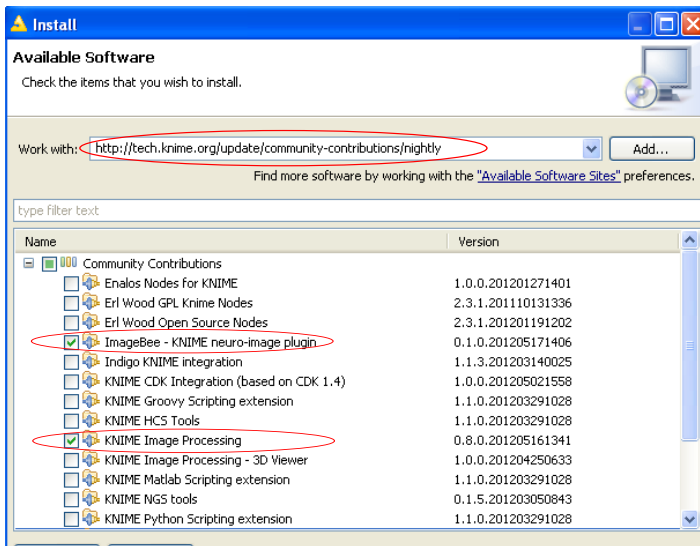
Examples at <http://www.tech.knime.org/imagebee-analysing-imaging-data-from-the-honeybee-brain>

Example data at http://neuro.uni-konstanz.de/imagebee/example_data.zip

Install the KNIME plugin:

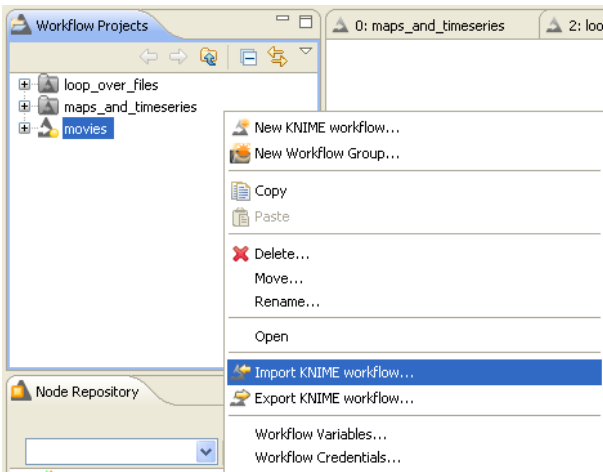
- 1) Install KNIME desktop version (www.knime.org): download and unpack
- 2) Add this line to your "knime.ini": "-Dorg.knime.container.cellsinmemory=0"
- 3) Increase memory available to VM in "knime.ini":
change "-Xmx500m" to "-XmxASHIGHASPOSSIBLEm"
- 4) start knime.exe (if it doesn't start, you have probably chosen too much memory in step 3)
- 5) Help - "Install new software"
- 6) Install both the **KNIME Image Processing** and the **ImageBee neuro-image** plugin:
<http://tech.knime.org/update/community-contributions/nightly>

} preparing KNIME for large movie files

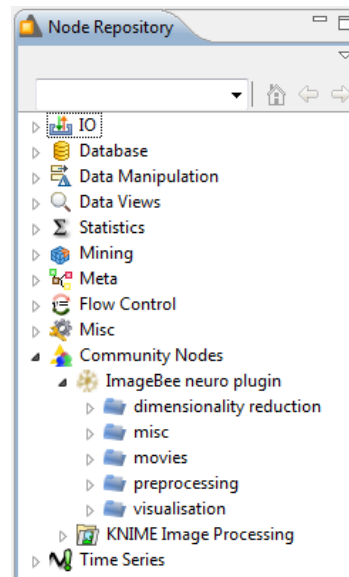


Importing example workflows:

- 1) Right-click into WorkflowProjects
- 2) Select Import KNIME workflow
- 3) Choose file (examples are on the website)



Where are the nodes?



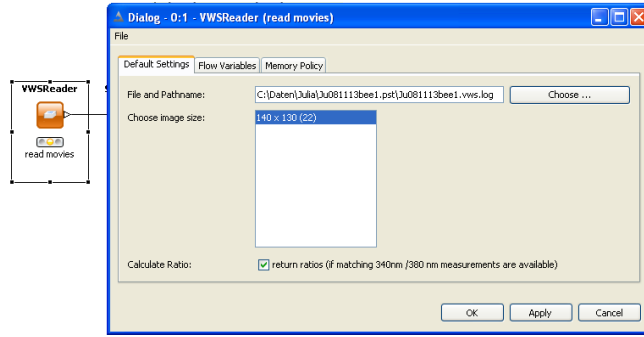
ImageBee plugin for KNIME.

Examples at <http://www.tech.knime.org/imagebee-analysing-imaging-data-from-the-honeybee-brain>

Example data at http://neuro.uni-konstanz.de/imagebee/example_data.zip

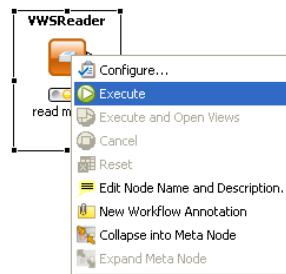
Configure a KNIME node:

- 1) Right-click on a node (e.g. VWSReader)
- 2) Select "configure"
- 3) Adjust parameter settings in the configure dialog

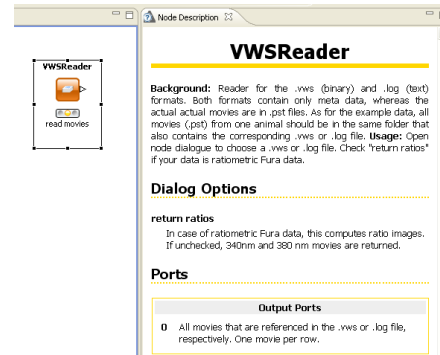


Execute a KNIME node:

Right-click: Execute



View node description by clicking on the node



Use a Table Cell Viewer node to look at the data:

- 1) Drag a Table Cell Viewer from the repository onto the workflow
- 2) Connect the Table Cell Viewer to the output of another node.
- 3) Right-Click on Table Cell Viewer - select "execute and open views"

